

NEWSLETTER

December 2023

Meetings are held in
The Corn Exchange, Bourne.
Third Monday of the month
Next meeting 18 December 2023

BOURNE u3a

Learn, Laugh, Live

WEBSITE: <https://www.bourneu3a.org.uk>
REGISTERED CHARITY NUMBER: 1100094

The Chair's Chat

Hello there

As I write this it is flipping cold, there is snow on the ground and it is raining.

However several of the houses near to where I live are gleaming with lights round the fences, brightly lit reindeers or snowmen in the gardens and lovely Christmas trees stand in the windows. A sight to brighten even the gloomiest evening.

It was good to see so many of you out and about in Bourne for the annual switching on of the lights

As a volunteer in the Old Town Hall it was a happy feeling to carry so many trays of mulled wine, mince pies and coffee to shivering people. (Even though there were many references to Acorn Antiques as I wobbled my way through the tables).

Now to our own Christmas event at our next meeting on 18th December. The Spalding Ukulele Orchestra will be coming along to entertain us and, just for fun, there will be a Best Xmas Jumper or Hat competition. So dig out those jumpers, decorate those hats and you may even win a small prize.

So please come along and support us and enjoy a happy afternoon no matter what the weather is like.

On behalf of the committee I would like to wish you all a peaceful and warm Christmas and a very happy New Year.

Best wishes
Pat



Speakers for 2023/2024

Date	Subject	Speaker
18 December	The Ukulele Orchestra of Spalding	
15 January	The Art of Storytelling	Keith Butters
19 February	Farming and Wildlife	Nicholas Watts

Desk Clerks, Meet and Greeters

Desk Clerks	18 December	Eleanor Boss	David McDonald	Jan Burton
Meet & Greet	18 December	Cathy Hebborn	TBA	TBA
Desk Clerks	15 January	TBA	TBA	Jan Burton
Meet & Greet	15 January	Colin Peters	TBA	TBA

Hello there

We are very much in need of adding to our Meeters and Greeters list.
The more people who are willing to help the better.

I am sure that many of you will agree that it can be very daunting to walk into a hall and not know a soul. My first thought many years ago was to turn and run. Thanks goodness I didn't as joining the Bourne u3a was one of the best things that I have done.

That first impression for visitors (who hopefully become members) and for new members is really important.

So please, please contact me even if you are only thinking about it and as soon as I have a few names I will arrange for us to get together with Bill Reid who organises the group and have a meeting where we can go through everything you need to know.

This is a great group for our newer members to join as your first meeting is fresh in your mind and you may well have some good ideas that we can use.

Very best wishes.

Pat (Howes) Contact 01778 425786 or james_howes@sky.com

New members since the November Newsletter, the 6th November, are as follows:

Karen Wood, Peter Wood, June Sedwill and David Unwin.

Jean Parsons – Membership Secretary

Anytime Out – Coach Trips

So, as 2023 wends it's way towards it's conclusion, our lovely Anytime Out group embarked on the last trip of this year, Christmas shopping. Leaving Bourne bus station at the later time of 09:30, we set off for Rushden Lakes in the comfort of our A&P Travel coach, expertly driven, as always, by Marcus.

Just over an hour later we arrived, in the heart of Northamptonshire, and were soon exploring the plethora of retail stores and eateries, there truly is something for everyone.

Fashion, Health & Beauty, Stationery, Sports & Specialist stores, plus coffee shops, cafes & restaurants including burger bars, pizza & pasta, Asian style food & more. There is so much choice, it was difficult to decide where to eat, as there are also street market type stalls selling food and drink, and specialist, hand made artisan gifts.



As it was chilly, but dry, we opted to sit inside Jamaica Blue cafe for morning coffee, but all offer the option of outside seating, including pods at some eateries, on the decking of the boardwalk.

Lunch on this occasion was in Chi restaurant, specialising in Thai food, absolutely delicious. On our previous visit we opted for Wildwood and it's pizza/pasta style food, so many choices. In fact, we lingered so long over food, we ran out of time for shopping, unlike our savvy group members, who had already made several forays back to our coach to deposit their purchases.

For anyone wanting something more adventurous than shopping or eating (who are these crazy people?) a fabulous boardwalk edges Skew Bridge Lake, & houses the Discovery Centre, which provides information for exploring the Nene Wetlands. At the other end is the Boathouse, from where canoes, kayaks or pedalo swans can be hired to navigate the waterways.

We headed back to the coach for our 3:30 departure, with lighter wallets & a hold full of shopping! Some of us having been more successful than others buying that "special outfit" for our Christmas lunch on 7th December. Arriving back in Bourne just after 4:30, our happy shoppers disembarked with arms full of gifts & packages.

Next year our plans include a nice mix of short & long trips, for example Nottingham, Leicester, Shuttlesworth & Swiss Garden, plus Chatham Docks (where Call The Midwife is filmed) and our day at the seaside visiting Norfolk Lavender & Hunstanton.

Why not join us?



'Some things in the shops, were completely inappropriate and the trousers were not very good either'

Friday Striders

Our final walk of 2023 was a gentle 5 miles starting at Kings Cliffe Active. Walk ran parallel to the railway cutting before crossing Kings Cliffe Meadow and onto Wood Lane. Turning right at Wood Lane the walk went up to walk through Westhay Woods using the Jurassic Way. On reaching Top Lodge a short coffee break was taken before setting off again taking paths through Fineshades before rejoining the Jurassic Way and back onto Wood Lane.

The route back to the car park took us along the railway cutting and embankment. King's Cliffe was situated on the line between Market Harborough and Peterborough. The station was opened on 1 November 1879 and closed to passengers on 6 June 1966. On that date the section from Rugby (Midland) to Kings Cliffe was closed completely, but the line east of Kings Cliffe station remained open for goods traffic.

On 3 June 1968 Kings Cliffe station was closed to goods along with the track to Nassington station where a private siding and



King's Cliffe Station



the line to Yarwell Junction at Wansford remained in use until 1971 to serve a sand and gravel quarry.

Group Leader Janet Cartwright

Science and Tech Group Meeting November 2023

The Subject of the meeting held on Tuesday 7th November meeting was called:- **Gadgets for the Disabled** presented by Ian Tanner.

Ian was standing in at short notice following the cancellation of a visit to Buckminster model flying club.

As a retired engineer Ian joined a charity called REMAP, who are a group of retired engineers, who, in conjunction with health professionals, put their skills and experience into inventing equipment to help disabled people to carry on having as a normal life as possible.

Ian had brought along several examples of equipment he had designed and had manufactured that had transformed lives, such as a device for a lady who was suffering from Parkinson's disease, she had not been able to feed herself, but by devising a piece of equipment that could support the weight of her hand, the shaking that is a symptom of the disease, was steadied and she was able to hold a spoon and feed herself.


Some of the devices were physically very simple but had required thinking "outside of the box" to device, such as sticking two clothes pegs together so that stroke victims, who had the use of only one hand, could peg out wet clothes by clipping one peg to the clothes and then using the other one to attach to the clothes line, an operation that would have been near impossible with one hand.

Even more intriguing was a device to help a blind swimmer be able to swim in a straight line by touching her nose on the left or right side to indicate which direction she was deviating from so that she could maintain direction. Ian also showed various devices to supplement, and in some cases replace, the universal grabber issued by the NHS that is supposed to assist with everything. One such being a piece of string with a bulldog clip on each end to pull your pants up, much more satisfactory.

Ian finished off his presentation with a rope trick so that, so he said, we would have something to remember it by.

A very interesting presentation that not only highlights the contribution that retired people make to the community but also many times with better ideas particularly in cases where bespoke solutions are required.

The next meeting will be on Tuesday 9th January 2024.
Report by Michael Thorpe



Custom-made equipment for people with disabilities.



REMAP PETERBOROUGH
A free service for **PETERBOROUGH AND DISTRICT**

www.remap.org.uk

Poetry Group

In November, the Poetry Group met to enjoy the work of John Milton - he of 'Paradise Lost' fame, and also to share some seasonal poems relating to Autumn, Remembrance, etc.

'Paradise Lost' is an epic of more than 10,000 lines that was first published in 1667. It describes the war in Heaven when Satan and his followers were defeated and expelled to the bounds of Hell, but then took revenge on God by leading mankind into sin and so expulsion from the paradisiacal Garden of Eden. Here we, mankind (womankind too), continue in an unforgiving world of trials, troubles, tribulations and tears!

Among our 'seasonal' poems was the following from Thomas Hood (1799-1845):

November

No sun, no moon!
No morn, no noon,
No dawn - no dusk - no proper time of day.

No warmth, no cheerfulness, no healthful ease,
No comfortable feel in any member -
No shade, no shine, no butterflies, no bees,
No fruits, no flowers, no leaves, no birds!
November!

Philip Dunkerley
Group Leader



Portrait of Milton c1629



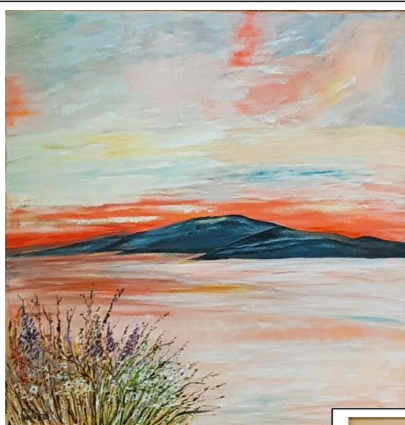
Keith Butters - Storyteller in Lincolnshire, is our speaker in January 2024.

Keith tells stories about his native home county of Lincolnshire. He has lived in the same cottage all his life except for three years when he was away at college. Brought up on a farm, he understands the joys and sorrows of Lincolnshire rural life.

His father, Geoff, was a storyteller but did not know it! In other words, Geoff just told us about the experiences of himself, family and friends.

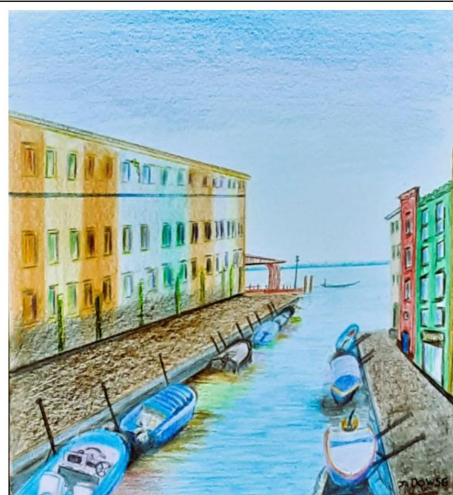
Keith tells a story of Jabez, his great-grandfather, who went courting one winter's night in South Ormsby. He still has a recording of Geoff telling the story. Keith has a number of Lincolnshire stories including the "Wormsgay Dragon," "The Buried Moon" and "Jack went to Horncastle Fair."

Bourne Brushstrokes - December Gallery



With "Dark Nights" *June Sedwill* coming earlier our artists are turning their thoughts to works of "Remembrance" *Angela Gray*, "Coastal Views" *Ann Wakeford*, "Fields & Dales" *Margaret Shepherd* and "Warmer Climates" *Janet Dowse* before "Santas Briefing" *Gavin Jeffery*

Seasons Greetings to you all



BOURNE u3a: WINE APPRECIATION GROUP 3

On 10 November we concluded our comparison of the same wine from the old and the new world.

On this occasion our host offered two merlots, one from France, the other from Chile, for our consideration. Both wines were judged to be very similar. This has not always been the case with our previous comparisons of other wines. On balance, the Chilean option was preferred, it being thought that the French merlot was somewhat lacking in body.

However, almost certainly of more interest to readers of this newsletter was the presence at our meeting of a much older bottle of wine, namely a 1963 Niersteiner Riesling. This had been provided by Pauline Pickett, one of the founder members of Bourne u3a.

The evening's host and the group leader were delegated to open the bottle and make a preliminary judgement as to its suitability for drinking, Notwithstanding that subsequent googling assured us that white wine could be safely drunk for some years after bottling, after a tentative first sip we came to the cautious and conservative view that forty years was somewhat in excess of the 3-5 years



recommended and therefore it would be sensible to miss out on the Riesling and instead move on to the tea and coffee option. In doing so we were nevertheless very conscious that the very fact of our meeting together to taste wine owed much to the enthusiasm of people like Pauline in establishing Bourne u3a in the first instance.

John Boss
Group Leader

GROUPS WITH VACANCIES - 1 December 2023

Group	Leader	Meets	Venue
NEW - New Age Kurling	Interim leader - Pat Howes	Inaugral meeting - 9 January 2024 - twice a	Corn Exchange
Abbey Church Garden Group	Malcolm Scriven 01778 426483	Last Tuesday afternoon of each month or as notified	Outside Church in Church Walk
Antiques & Collectables	Steve Froy 01778 393017	2nd Monday afternoon every month	Wake House
Art History 2	Betty Davies 01778 571631	1st Wednesday morning every month	At Members Homes
Aviation History	John Owen 07947 741842	4th Thursday afternoon every month	Wake House
Birdwatching / Natural History	Vaughan Roberts 01778 426255	1st Friday of the month	As Notified By Group Leader
Church Visiting	Sue Hadfield 01778 426417	4th Thursday morning Monthly	As Notified By Group Leader
Clay Pigeon Shooting	Gerry McLean 01775 750544	The first Friday of every month	As Notified By Group Leader
Creative Writing 2	John Boss 01778 424153	3rd Wednesday of every month	At Members Homes
Desk Clerks	Bill Reid 01778 570234	At the main Monday meetings	
Dining	Kay Williams 01778 570650	3rd Thursday evening every month	As Notified By Group Leader
Drama Workshop	Malcolm Ranson 01778 423834	2nd Wednesday every month	Methodist Church Hall, Thurlby
Friday Striders	Janet Cartwright 01778 344831	Friday mornings twice a month	
Garden Group	Janet Blacoe 01778 393226	1st Tuesday afternoon every month	St Firmins Church Hall, Thurlby
Green Bowls	David Ashby 01778 424137 or Steve Froy 01778 393017	Currently Tuesdays and Thursdays Outdoors BTBC	As Notified By Group Leader
Handicrafts	Carol Robbins 01778 217028	Tuesday p.m 14.00 - 16.00	Butterfield Centre
Jazz	May Slater 01778 425525	On hold until the New Year but please contact leader if you are interested	Check with Group Leader
Litter Picking Group	Vaughan Roberts 01778 426255 or Pat Howes 01778 425786	3rd Friday morning	As Notified By Group Leader
Local History	Malcolm Scriven 01778 426483	1st Monday of every month at 1400	Wake House
Meeters & Greeters	Bill Reid 01778 570234	At the main Monday meetings	
Play Reading	Marylyn Black 01778 420472 or Kath Dolby 01778 423210	1st and 3rd Wednesday mornings each month	Members homes
Railway	Mike Morgan 07638 622288 or Paul Gosden 07946 397192	First Wednesday of each month at 14.00Hrs	St. Firmins Church Hall Thurlby
Reading 4	Chris Ankerson 01778 422391	Last Tuesday morning every month	At Members Homes
Reading Morton	David Mainwaring 07711 944305	1st Friday morning every month	At Members Homes

GROUPS WITH VACANCIES 01 December 2023 continued

Science and Technology	Malcolm Scriven 01778 426483 or Eric Cooper 01778 394656	1st Tuesday morning every month	St Firmins Church Hall, Thurlby
Singing for Pleasure	Marjorie Wright 01778 422252 or Jill Gornall 01778 423677	2nd and 4th Wednesday afternoons every month	Methodist Church Hall
Theatre Group	Janet Burton 01778 426462	2nd Monday afternoon each month	Wake House
Table Tennis	David Moisey 01778 421864	Every Tuesday and Friday Afternoon	Harveys Gym
Ten pin Bowling	Dave Rippon 01778 422101	Every Wednesday Morning	Hollywood Bowl Peterborough
Wayfarers Walking Group	Bill Reid 01778 570234	2nd and 4th Tuesday Mornings at 10.30 every Month	As Notified By Group Leader
Wine Appreciation 2	Gerry Blacoe 01778 393226	4th Friday evening every month except December	At Members Homes

Looking for a new venue? The Bourne Cricket Club clubhouse – comfortable, warm with all the usual facilities – is available for £20 per session (not per hour). Contact Lisa on 07989 131 121.

SAVE THE DATE

Monday 18 December 2023

Bourne u3a Christmas General Meeting

The Ukulele Orchestra of Spalding



BOURNE U3A COMMITTEE 2023–2024

Title and/or Role	Name	Email
Chair	Pat Howes	chairwoman@bourneu3a.org.uk
Vice Chair	Kevin Grewcock	vicechair@bourneu3a.org.uk
Secretary	John Boss	secretary@bourneu3a.org.uk
Secretary (pro tem)	Janice Lyon	sec2@bourneu3a.org.uk
Treasurer & Equipment Loan	Mike Alexander	treasurer@bourneu3a.org.uk
Membership Secretary	Jean Parsons	membership@bourneu3a.org.uk
Groups Co-ordinator	Richard Linning	groups@bourneu3a.org.uk
Speaker Finder	Gill Stoneman	speaker@bourneu3a.org.uk
Raffle Organiser	Val Shuell	raffle@bourneu3a.org.uk
Rotas	Bill Reid	rotas@bourneu3a.org.uk
Webmaster	Martin Adkins	webmaster@bourneu3a.org.uk
Newsletter Editor	Martin Adkins	newseditor@bourneu3a.org.uk
Committee Member	Jacqui Linning	committee4@bourneu3a.org.uk
NON--COMMITTEE APPOINTMENTS		
Data Manager including Beacon Administrator	Phil Pavier	data@bourneu3a.org.uk

I welcome reports of Group activities with photographs, if applicable.
The copy date for the next issue will be 9am on the first Monday in January
Please e-mail your copy and pictures to: newseditor@bourneu3a.org.uk
or post to: Martin Adkins c/o Wake House, 41 North Street, Bourne, PE10 9AE

Please Note—All copy to be emailed using Microsoft Word or similar.
All photographs to be emailed separately as JPEG's.
PLEASE Do NOT embed photographs in your word document.

Quote of the Month

"To appreciate the beauty of a snowflake it is necessary to stand out in the cold."
— Aristotle